

HONDA
The Power of Dreams

www.hondaphil.com

The New **CITY**



HONDA

BOLDER AND SHARPER EXTERIOR

Angular lines and sharp creases guarantee that the Honda City glides through the air with utmost efficiency. The result is a head-turning shape with sophisticated styling and design; an announcement for all that you've arrived.



LED HEADLIGHTS**

Safety is paramount, thanks to superior driver visibility provided by the new headlights.



LED DAYTIME RUNNING LIGHTS

Stay illuminated on the road with your commanding style and presence.



NEW ALLOY WHEEL DESIGN*

Polished five-spoke 16-inch alloy wheels exude understated style.



LED FOG LIGHTS**

Drive with confidence under any weather condition.



NEW FRONT GRILLE

Commanding and imposing, the new front grille is a striking sight that heralds your arrival.

*For VX and VX+ variants
** For VX+ variant



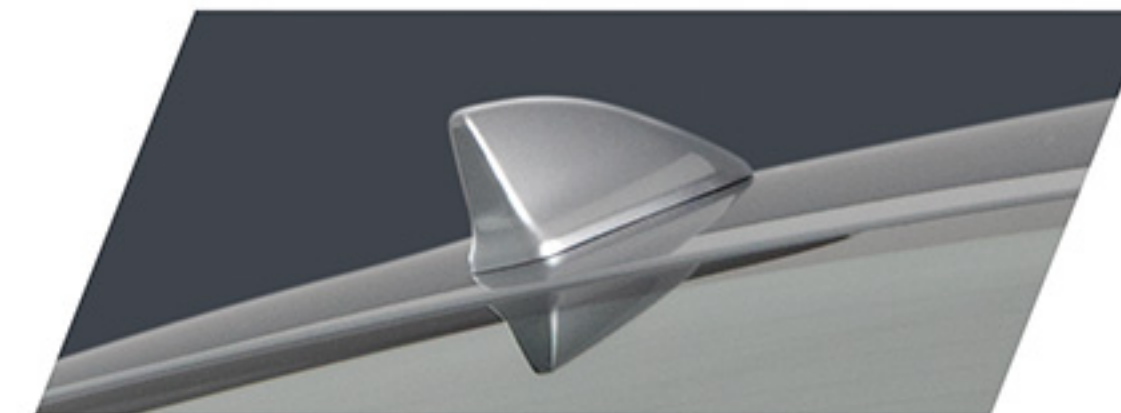
NEW REAR DESIGN

Stunning rear end, thanks to a sculpted rear bumper and classic chrome trunk garnish.



TAIL LAMPS

Attention-grabbing, wide multifaceted tail lamps ensure absolute safety.



SHARK FIN ANTENNA

Shark fin antenna adds an upmarket touch to the already fashionable exterior.



STREAMLINED SIDES

Fluid upward-creased character line emphasizes the Honda City's sophistication and elegance.



MODERN TECHNOLOGY

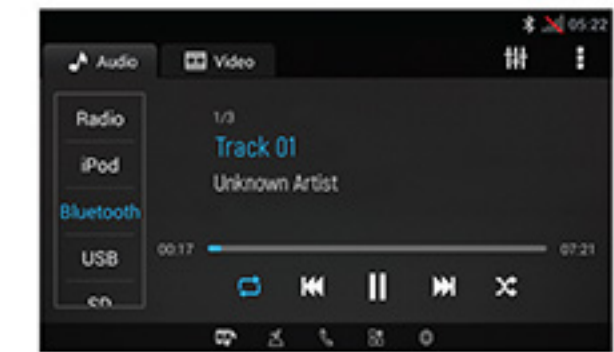
Every detail is made with the finest quality, which keeps the Honda City at the top of its class.



NAVIGATION SYSTEM*



CUBE TECHNOLOGY*



**AUDIO PLAYBACK
WITH MULTI-CONNECTIVITY**



**NEW 7" TOUCHSCREEN
WITH NAVIGATION***

* For VX and VX+ variants



TRUNK SPACE (536 LITERS)

All your belongings for the trip are in safekeeping inside this expansive trunk space.

SPACIOUS INTERIOR

Sink into the comfortable cabin with generous space and ample storage to seat your guests and take care of your goods.



COMFORTABLE CABIN SPACE

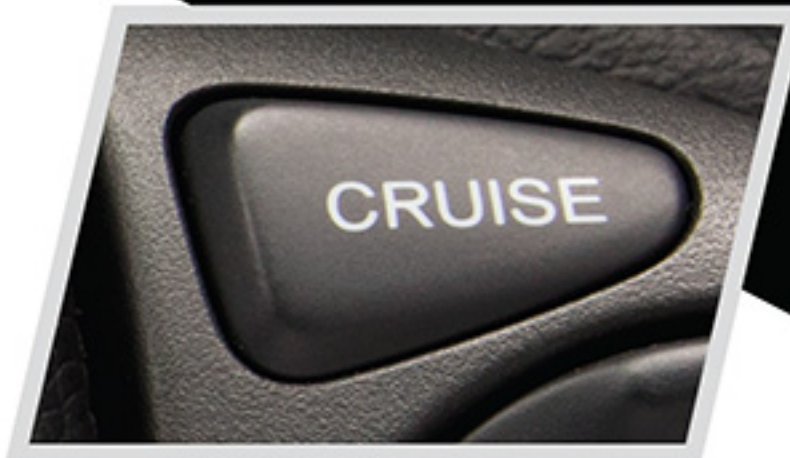
Indulge in the sheer comfort of all-leather seating* inside the Honda City. It guarantees pleasure with a premium touch.

* For VX+ variant

EASE OF USE - CONTROLS WITHIN REACH

Keep your driving under control with your touch. Access an array of control options with a simple press. All the important buttons are within reach for your comfort and convenience.

The steering wheel can be adjusted to help you find your comfortable driving position.



CRUISE CONTROL*

Maintain a constant vehicle speed without having to keep your foot on the accelerator pedal.



HANDS-FREE TELEPHONE CONTROLS*

Accept or reject calls with a simple press and engage callers hands-free for your convenience.



AUDIO CONTROLS**

Keep your hand on the wheel and eyes on the road with intuitive steering-wheel-mounted audio controls.

TOUCHSCREEN AIRCON

Activate the automatic air-conditioning system with one effortless touch.



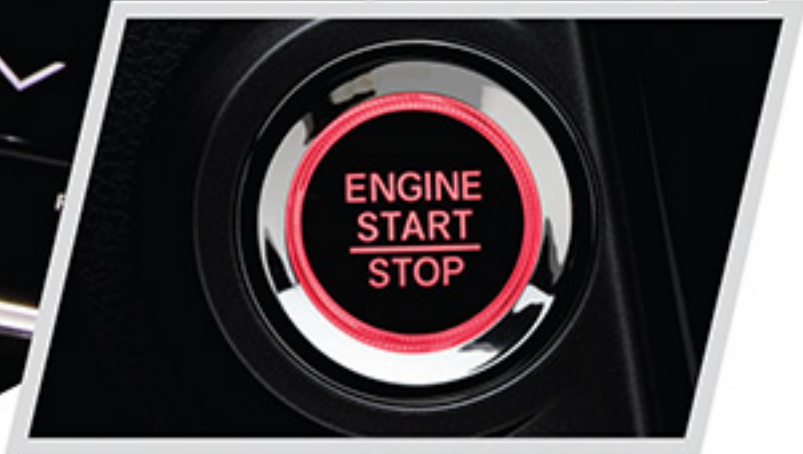
SMART ENTRY*

Keyless entry uses a proximity sensor for unrivalled and secure access to the Honda City.



POWER FOLDING MIRRORS*

Simultaneously fold and unfold both side view mirrors with ease.



PUSH START SYSTEM*

Modern push-button ignition is a hassle-free interface for starting the engine.

* For VX and VX+ variants
** For E CVT, VX, and VX+ variants

POWERFUL, FUEL-EFFICIENT & ENVIRONMENT-FRIENDLY

The Euro-4 compliant 1.5-liter i-VTEC engine of the Honda City can make short work of any urban challenge. Variable valve timing and lift electronic control technology optimize engine response based on the driver's instantaneous demands, thus providing spirited dynamics while maintaining fuel economy.



CVT TRANSMISSION*

A "torque converter" allows seamless shifting, gives rapid response, and delivers outstanding fuel economy.



ECON MODE BUTTON*

City's ECON mode adjusts vital systems that affect fuel economy, such as throttle, shift mapping, and air-conditioning.

* For CVT equipped models
** For VX and VX+ variants



ECO COACHING AMBIENT METER**

Be guided by the Eco Ambient Light Meter to get the best mileage. The green color indicates efficient driving.

LESS VISITS. MORE SAVINGS.

With the Honda City's genuine parts and affordable maintenance feature, you'll be able to save more of your precious time and money.

- ♥ Trusted genuine parts under warranty.
- 🔧 Parts are manufactured locally, therefore easily sourced and readily available.
- 😊 Quality parts let the City require only 2 maintenance visits per year.



Honda **PROTECT PLUS** EXTENDED WARRANTY

The Honda Protect Plus Extended Warranty provides customers with an additional warranty of 2 years or 40,000 kilometers, whichever comes first. This is on top of the standard 3-year warranty, and takes effect on the 4th year of the vehicle, after the standard warranty has lapsed.

Transferable at no cost and refundable at minimal cost, this extended warranty is aimed at giving our valued customers peace of mind, protection from unexpected repair expenses, quality service and genuine parts, and increase in resale value of vehicle.

The Honda Protect Plus Extended Warranty has the same coverage, exclusions, and owner responsibilities with the standard warranty. It is available for purchase for all buyers of any Honda vehicle. Buyers may purchase it together with their new Honda vehicle, or at anytime within 30 days from the release of the vehicle.

CONFIDENCE IN SAFETY

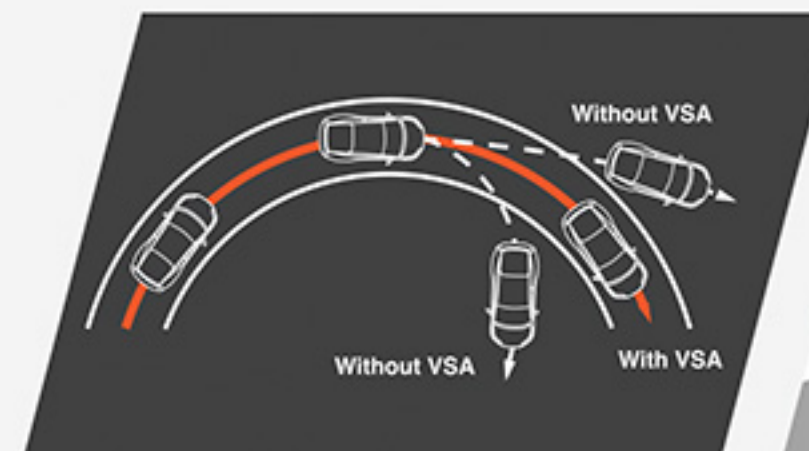
For added peace of mind, the Honda City makes no compromise when it comes to passenger safety features. Traveling with your loved ones has never been this secure, even during long, spirited drives.

Enjoy each journey with confidence in life-saving features that provide you with utmost security. Dual front SRS airbags and side and side curtain airbags offer optimal head protection for both driver and passengers of the front and rear seats.



MULTI-VIEW REVERSE CAMERA WITH GUIDELINES*

Additional rear visibility is made possible with the Honda City's multiview reverse camera featuring 3-view mode—normal, wide-angle, and top-down view.



VEHICLE STABILITY ASSIST (VSA)**

Vehicle Stability Assist (VSA) will help keep drivers in control by eliminating understeer and oversteer in the event of traction loss.



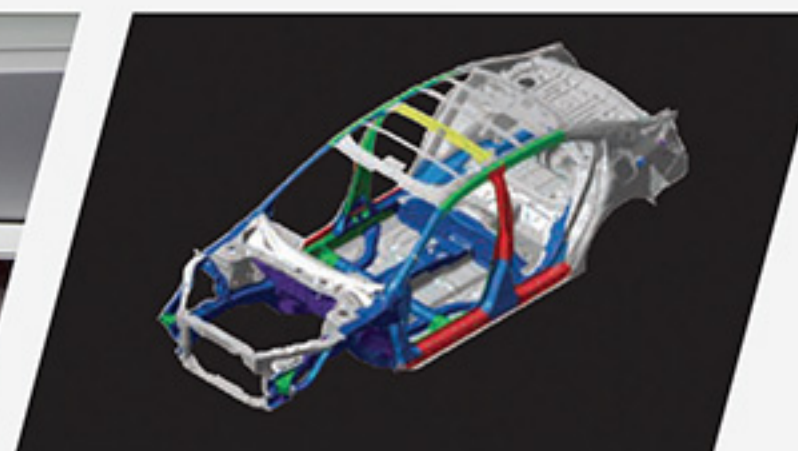
HILL START ASSIST (HSA)**

Hill Start Assist (HSA) gives you additional confidence on inclined roads, knowing you have more time shifting your foot from the brake to the gas pedal.



EMERGENCY STOP SIGNAL (ESS)**

In cases of road emergency such as sudden braking, the ESS automatically activates hazard warning lights to prevent potential collision with surrounding drivers.



G-CON BODY STRUCTURE

G-Con body construction absorbs the force of impact during collisions. Honda's extensive crash testing and research has resulted in a body shell that is crash-compatible with other vehicles.

* For VX and VX+ variants
** For VX+ variant



VX + NAVI



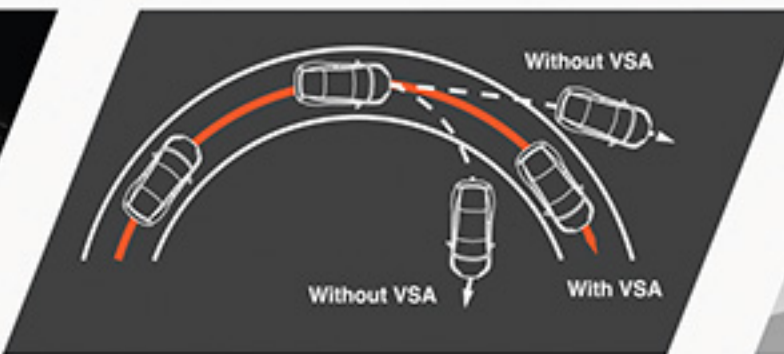
LED HEADLIGHTS WITH
LED DAYTIME RUNNING LIGHTS



LEATHER SEATS



SIDE AND SIDE CURTAIN AIRBAGS



VEHICLE STABILITY ASSIST
(VSA)



HILL START ASSIST
(HSA)



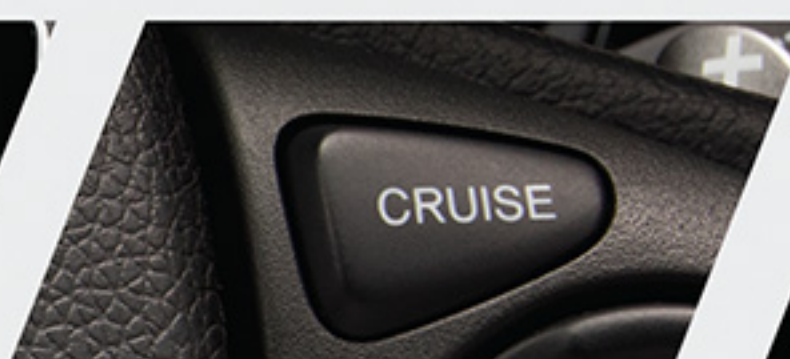
LED FOG LIGHTS



VX NAVI



NEW 7" TOUCHSCREEN
WITH NAVIGATION



CRUISE CONTROL



SMART ENTRY WITH
PUSH-START BUTTON



NEW 16" ALLOY WHEELS



REAR CAMERA



POWER FOLDING MIRRORS



E



NEW 7" TOUCHSCREEN
DISPLAY AUDIO*



LED DAYTIME RUNNING LIGHTS



NEW 15" ALLOY WHEELS*



ECON BUTTON*



SHARK FIN ANTENNA*



SECURITY ALARM

* For E CVT variant

COLOR VARIANTS



(New) Lunar Silver Metallic



Gold Brown Metallic
(For VX and VX+ variants)



Modern Steel Metallic



Ruby Red Pearl
(For VX CVT and E CVT variants)



Crystal Black Pearl
(For VX CVT, E CVT and E MT variants)



Taffeta White

Modulo

Honda Custom Performance



FRONT UNDER SPOILER



SIDE UNDER SPOILER



REAR UNDER SPOILER



WING TYPE TRUNK SPOILER



DUCK TYPE TRUNK SPOILER



DOOR VISOR



SPECIFICATIONS

MODEL			NEW CITY			
VARIANT			1.5 VX+ Navi	1.5 VX Navi	1.5 E	
TRANSMISSION			CVT		MT	
DIMENSIONS AND WEIGHT						
Dimensions	Length	mm	4,440			
	Width	mm	1,695			
	Height	mm	1,477			
Wheelbase		mm	2,600			
Tread	Front/Rear	mm	1,476 / 1,465		1,492 / 1,481	
Ground Clearance		mm	150			
Turning Radius		m	5.3			
Curb Weight		kg	1,121	1,107	1,091	1,074
Trunk Size		ltr	536			
Seating Capacity	persons		5			
ENGINE						
Type	Chain Drive SOHC I-VTEC 4 cylinder, 16-valve					
Fuel Supply System	Programmed Fuel Injection (PGM-FI)					
Engine Displacement	cc		1,497			
Bore & Stroke	mm		73x89			
Compression Ratio	-:1		10.3			
Max. Power	kW (ps)/rpm		88 (120) / 6,600			
Max. Torque	N-m (kg-m)/rpm		145 (14.8) / 4,800			
Drive-By-Wire			O			
Transmission			Continuously Variable Transmission (CVT)		5-Speed Manual	
Paddle Shifters			O		-	
AT Shiftlock			O		-	
Fuel Tank Capacity	l		40			
Catalytic Converter			O			
Emission Rating			EURO 4			
ECO ASSIST SYSTEM						
Econ Button			O		-	
Eco-Coaching			Ambient Meter		Eco Lamp	
CHASSIS						
Suspension	Front		Independent McPherson Strut with Stabilizer			
	Rear		H-shaped Torsion Beam with Stabilizer			
Brake	Front		Ventilated Discs			
	Rear		Drum Type			
Parking Brake Type			Hand Brake			
STEERING SYSTEM						
Gear Type			Electric-Assist Rack & Pinion			
Power Steering			Electric Power Steering (EPS)			
Steering Wheel	Material		3-Spoke Leather with Garnish	3-Spoke Urethane with Garnish	3-Spoke Urethane	
	Controls		Audio & Bluetooth Hands Free Telephone		Audio	-
	Adjustment		Tilt & Telescopic			
Cruise Control			O		-	
EXTERIOR						
Head Lights			LED	Multi-Reflector Halogen		
Daytime Running Lights			LED Guide Type			
Fog Lights			LED	Halogen		
Side Turn Signal Lights			Door Mirror Integrated		Fender Mounted	
Tail Lamp			Bulb Type			
High Mount Stop Lamp			Bulb Type			
Front Grille			Chrome			
Door Handles			Chrome		Body Color	
Door Mirrors	Color		Body Color			
	Adjustment		Power Adjustable			
	Power Folding		O		-	
Trunk Garnish			Chrome		Silver Painted	
Trunk Release Button			O		-	
Rear Diffuser			O (with Integrated Reflectors)			
Front Wipers			Intermittent with Washer			
Antenna			Shark Fin		Rear Micro Type	
Tire Size			185 / 55 R16		175 / 65 R15	
Wheel Size and Type			16 x 6J Aluminum Alloy		15 x 5.5 J Aluminum Alloy	15 x 5.5 J Steel Rim with Full Cover
Spare Tire			Space Saver Type			

MODEL			NEW CITY			
VARIANT			1.5 VX+ Navi	1.5 VX Navi	1.5 E	MT
TRANSMISSION			CVT			
INTERIOR						
Console Panel			Gun Metallic with Soft Pad		Gun Metallic	
Audio System	Type		7" Touchscreen with Navigation		7" Touchscreen	Advanced 2-DIN with CD
	Connectivity		USB-in, Bluetooth, & HDMI		USB-in & Bluetooth	USB-in, AUX-in, & Bluetooth
	Bluetooth		Hands-Free Telephone & Audio Streaming			
	Speakers		4			
	Tweeters		-			
Airconditioning System			Automatic with Touch Panel Controls		Manual with Rotary Controls	
Smart Entry with Push Start System			O		-	
Indicators	Tachometer		O		-	
	Speedometer		O		-	
	Fuel Level		O		-	
	Door Open Warning		O		-	
	Temperature		Light Type		Average Readout	
	Fuel Consumption Meter		Instantaneous & Average Readout		-	
	Range Computer		O		-	
	Trip Meter		Digital		-	
	Illumination Control		O		-	
Accessory Socket (12V)			Front x 1 & Rear x 2		Front x 1	
Map Light			O		-	
Dome Light			O		-	
Rear View Mirror			Day & Night		-	
Survivors	Vanity Mirror & Lid		Driver & Front Passenger		Front Passenger	-
	Ticket Holder		O		-	
Coin and Card Holder			O		-	
Grab Rail			4	3	1	
Inner Door Handles			Chrome		Black	
Windshield Defogger			Front & Rear		-	
Power Windows			O (With Auto UP/DOWN for Driver)		-	
Power Door Locks			O		-	
Seats	Material		Leather		Fabric	
	Front		Sliding and Reclining with Adjustable Headrest			
	Seatback Pocket		Driver & Front Passenger		Front Passenger only	
	Height Adjuster		O (Driver only)		-	
	Center Console		O		-	
	Rear		60:40 Split-Type with Center Armrest & Cupholder		Fixed Type	
Bottle Holder			4		2	
Cup Holder			4	2		
Interior Color			Black			
SAFETY & SECURITY						
Airbags	Front		Driver & Front Passenger			
	Side		O	-		
	Side Curtain		O	-		
Vehicle Stability Assist (VSA)			O	-		
Hill Start Assist (HSA)			O	-		
Anti-lock Brake System (ABS)			O		-	
Electronic Brake-force Distribution (EBD)			O		-	
Emergency Stop Signal (ESS)			O	-		
Multi-view Rear Camera			with Guidelines		-	
Seatbelts	Front		Adjustable 3-pt. ELR x 2			
	Rear		3-pt. ELR x 3			
	Seatbelt Reminder		Driver & Front Passenger		Driver	
Keyless Entry System			Smart Key		Wave Key with Trunk Release Button	
G-CON Body Structure			O		-	
Door Beams			O		-	
Heel Protector			Driver & Front Passenger		-	
Child Lock			O		-	
Child Seat Anchor (ISO - FIX)			O		-	
Pinch-free Power Window			Driver Side		-	
Security Alarm			with Immobilizer			



HONDA

www.hondaphil.com

Honda Cars Philippines, Inc. reserves the right to change or modify equipment or specifications at any time without prior notice. Details, colors, descriptions, and illustrations are for information purposes only. As specifications or any equipment may vary in some countries, please check with your nearest Honda dealer.

PHILIPPINES - MAY 2017



BLUE SKIES FOR
OUR CHILDREN

